

PROJECT DATA:

TOTAL SITE AREA: 60271 SQ. FT. 1.38 ACRES
 GROUND FLOOR AREA: 24671 SQ. FT. 4% OF SITE
 TOTAL FLOOR AREA: 3542 SQ. FT. 6% OF SITE
 PARKING/PAVED AREA: 38988 SQ. FT. 65% OF SITE
 OPEN (LANDSCAPED) AREA: 18816 SQ. FT. 31% OF SITE
 WATER BODIES: 0 SQ. FT. 0% OF SITE

NUMBER OF RESIDENTIAL DWELLING UNITS: 0

PARKING CALCULATIONS:
 USE: MINIATURE GOLF COURSE
 CALCULATED AT 1.5 SPACES PER HOLE

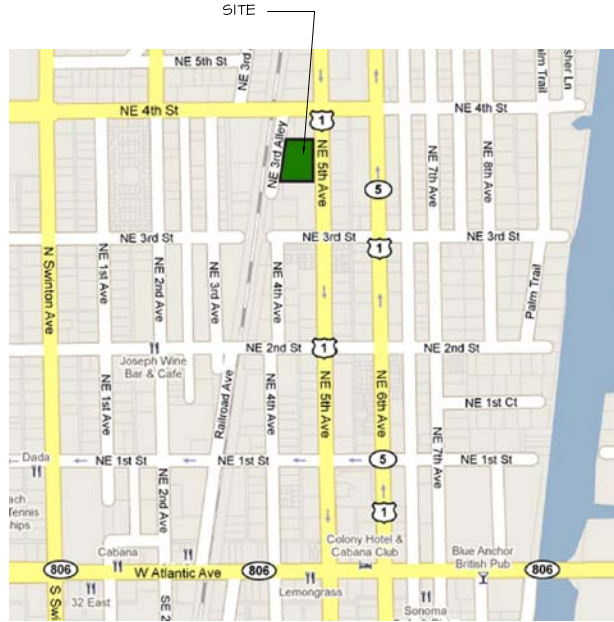
1.5 SPACE X 36 HOLES = 54 SPACES REQUIRED

PARKING PROVIDED:
 REGULAR: 41
 COMPACT: 10
 HANDICAPPED: 3
 TOTAL: 54

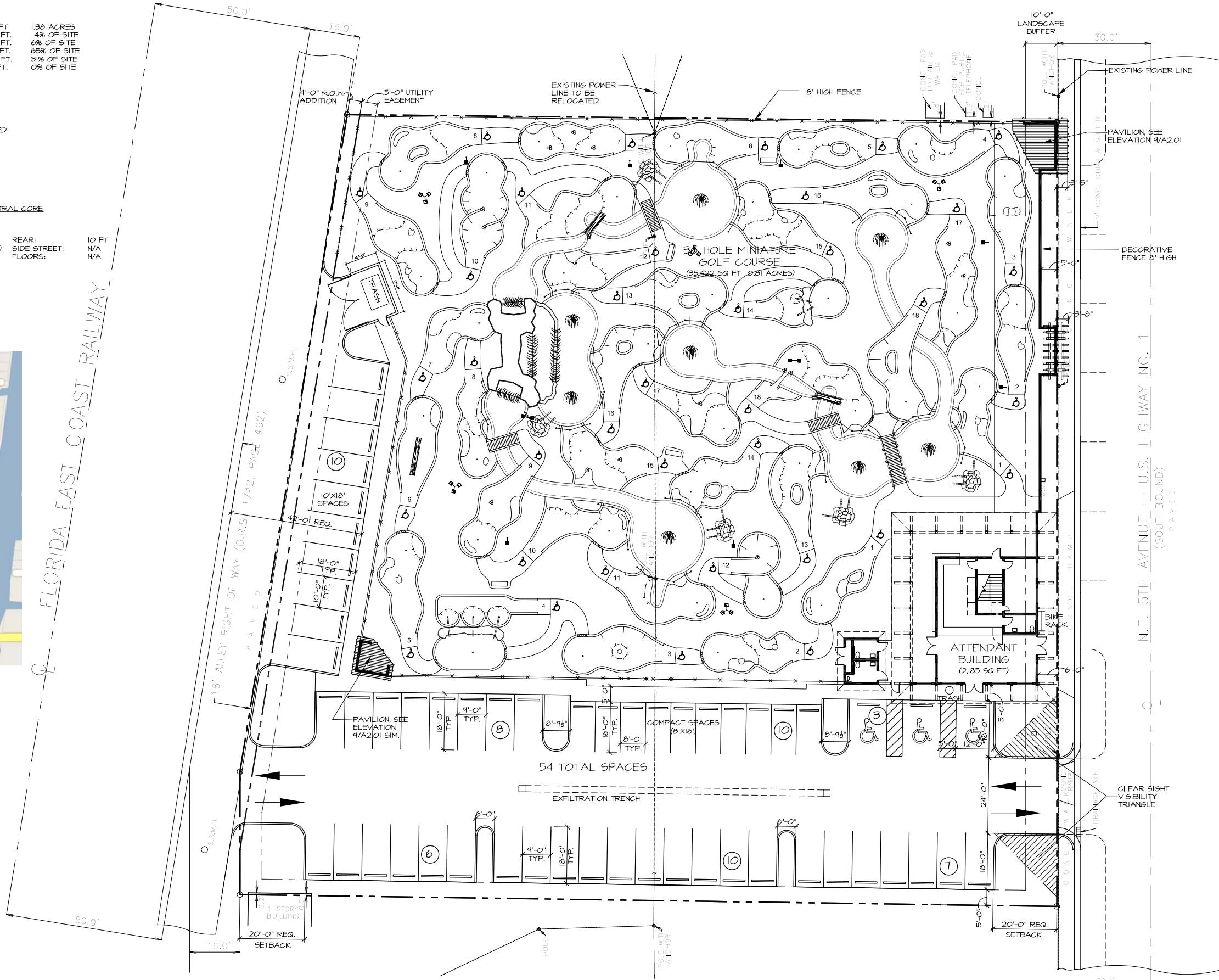
ZONING: CENTRAL BUSINESS DISTRICT - CENTRAL CORE

SETBACKS:

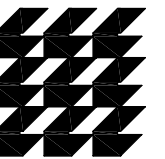
FRONT: 5 FT REAR: 10 FT
 INTERIOR SIDE: 0 FT (WITH REAR ACCESS) SIDE STREET: N/A
 HEIGHT: MIN-25 FT. MAX: 48 FT. FLOORS: N/A



2 VACINITY MAP
 A1.01 SCALE: N.T.S.



1 SITE PLAN
 A1.01 SCALE: 1/16" = 1'-0"



**CURRIE
 SOWARDS
 AGUILA
 ARCHITECTS**

Architects, Planners
 & Interior Designers

AA26001584
 134 N.E. 1st Avenue
 Delray Beach, Florida 33444
 TEL: 561 276-4951
 FAX: 561 243-8184
 E-mail: RGCP@CURRIEARC.COM

ISSUED FOR :
 CONDITIONAL USE 11/25/09

BIDS
 PERMIT
 CONSTRUCTION
 SEAL

PROJECT TITLE
 PUTT'N AROUND
 DELRAY BEACH

FEDERAL HIGHWAY
 DELRAY BEACH, FL 33444

REVISIONS

THESE DRAWINGS ARE PREPARED PER
 ESTABLISHED INDUSTRY STANDARDS AND
 REPRESENT THE ARCHITECT AND ENGINEERS
 DESIGN CONCEPT. THEY ARE NOT INTENDED
 TO PROVIDE EVERY DETAIL OR CONDITION
 REQUIRED TO CONSTRUCT THE BUILDING.
 THE CONTRACTOR THROUGH SUBMITTALS
 AND OTHER COORDINATION EFFORTS IS
 FULLY RESPONSIBLE FOR PROVIDING A
 COMPLETE AND OPERATIONAL BUILDING
 WHETHER INDICATED ON THE PLANS OR NOT.

FILE NUMBER
 090901a101

DRAWING TITLE
**SITE
 PLAN**

DATE
 11.25.09

DRAWN BY
 CLA

JOB NUMBER
 090901

DRAWING NUMBER

CONDITIONAL USE 11/25/2009

A1.01

THIS DOCUMENT IS THE PROPERTY OF CURRIE SOWARDS AGUILA ARCHITECTS INC. ALL RIGHTS ARE RESERVED. ANY REPRODUCTION OR OTHER USE OF THIS DOCUMENT, WITHOUT THE WRITTEN CONSENT OF CURRIE SOWARDS AGUILA ARCHITECTS INC., IS PROHIBITED.