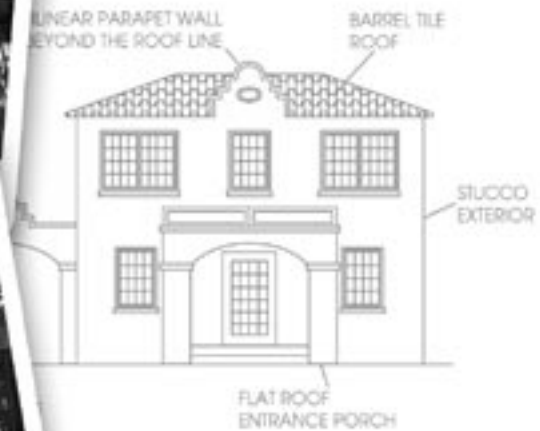


# *Debray Beach*

## HISTORIC PRESERVATION DESIGN GUIDELINES



July 2003

This project has been financed in part with historic preservation grant assistance provided by the National Park Service, U.S. Department of the Interior, administered through the Bureau of Historic Preservation, Division of Historical Resources, Florida Department of State, assisted by the Florida Historical Commission. However, the contents and opinions do not necessarily reflect the views and opinions of the Department of the Interior or the Florida Department of State, nor does the mention of trade names or commercial products constitute an endorsement or recommendation by the Department of the Interior or the Florida Department of State. This program receives federal financial assistance for the identification and protection of historic properties. Under Title VI of the Civil Rights Act of 1964, Section 504 of the Rehabilitation Act of 1973, and the Age Discrimination Act of 1975, as amended, the U.S. Department of the Interior prohibits discrimination on the basis of race, color, national origin, disability, or age in its federally assisted programs. If you believe you have been discriminated against in any program, activity, or facility as described above, or if you desire further information please write to: Office of Equal Opportunity, National Park Service, 1849 C Street, NW, Washington, D.C. 20240.

### **Photographic and Illustrative Sources:**

Photographs and other images on the following pages courtesy City of Delray Beach:

Front cover, 4, 7-12, 20 (bottom left), 21 (photo), 23 (bottom left), 24 (top right), 27 (top right), 28 (top right), 29 (residence), 30 (photos), 31 (bottom right), 36 (bottom), 40 (photo), 42 (top), 45 (photos), 46, 48, 52 (center), 53 (left, top and bottom), 54, 71

Photographs and postcards on the following pages courtesy Florida State Archives, Florida Photographic Collection:  
2 (top right), 3 (right, top and bottom), 23 (right)

Postcard of a Delray Beach streetscape, page 14, and 1920s photograph of a Mission style house in Delray Beach, page 26, courtesy Delray Beach Historical Society

Photographs of Old School Square on page 64 courtesy Old School Square Cultural Arts Center

Photograph of Orange Grove House of Refuge, page 2, from Lora Sinks Britt's book *My Gold Coast: South Florida in Earlier Years*

Ca. 1910 photograph of the original bridge over the East Coast Canal (Intracoastal Waterway), page 31, from Donald W. Curl's book *Palm Beach County: An Illustrated History*

Illustrations on the following pages adapted from illustrations in *Model Guidelines for Design Review, A guide for developing standards for historic rehabilitation in Florida communities*, Division of Historical Resources, Florida Department of State:  
Front cover, 20, 21, 23, 24, 26-30, 34, 39, 49, 50

Illustrations on pages 25, 40 and 41 adapted from *Design Guidelines for Historic Places, A Preservation Manual*, 1990, City of Delray Beach

Shutter illustrations on page 45 adapted from *Resourceful Rehab, A Guide for Historic Buildings in Dade County*, 1987, Metropolitan Dade County

Illustrations of window shuttering systems on page 58 adapted from *Preservation Information*, 1997, National Trust for Historic Preservation

Illustration of double-hung sash window on page 75 courtesy City of West Palm Beach Historic Preservation Office

All other photos and illustrations courtesy of Janus Research

# City of Delray Beach Design Guidelines

## TABLE OF CONTENTS

**Section I. Purpose Of Design Guidelines 1**

- Frequently Asked Questions ..... 1
- The City of Delray Beach: A Historical Overview ..... 2
  - The Florida Land Boom and Bust..... 3
  - The Great Depression through World War II ..... 3
  - The Aftermath of World War II to the Present..... 4

**Section II. Identifying And Preserving The City’s Historic Legacy 5**

- The Delray Beach Local Register of Historic Places ..... 5
- Designation Criteria ..... 5
- Historic Districts ..... 5
  - Contributing and Non-Contributing Resources..... 6
  - Old School Square Historic District ..... 8
  - Nassau Park Historic District ..... 9
  - Del-Ida Park Historic District..... 10
  - Marina Historic District..... 11
  - West Settler’s Historic District ..... 12
- The National Register of Historic Places ..... 13
  - Properties Listed in the National Register of Historic Places ..... 13
- Historic Sites Surveys ..... 14

**Section III. Process And Procedures 15**

- The Role of the City of Delray Beach Historic Preservation Board ..... 15
- Local Historic Designation Criteria ..... 15
  - Criteria for Significance ..... 15
- Certificates of Appropriateness ..... 16
- Variances from the Code of Ordinances ..... 17

<b>Section IV.</b>	<b>Prevalent Styles of Architecture</b>	<b>19</b>
	Introduction .....	19
	Chronology .....	19
	About Architectural Style .....	19
	Vernacular (Frame and Masonry).....	20
	Masonry Vernacular: Residential (1890–1940) .....	21
	Masonry Vernacular: Commercial (1890–1940).....	22
	Bungalow (1910–1940) .....	23
	Colonial Revival (1900–1930) .....	24
	Minimal Traditional (1935–1950) .....	25
	Mission (1919–1940).....	26
	Mediterranean Revival/Spanish Eclectic (1920–1940).....	27
	Monterey (1925–1940) .....	28
	Art Deco (1925–1940) .....	29
	Art Moderne/Streamline Moderne (1930–1945).....	30
	Contemporary (1950–1970) .....	31
	Ranch (1935–1975).....	32
<b>Section V.</b>	<b>Design Principles and Recommended Rehabilitation Treatments</b>	<b>33</b>
	Design Review by the Delray Beach Historic Preservation Board .....	33
	Exterior Surfaces And Materials.....	33
	Wood Siding .....	34
	Masonry (Concrete Block, Brick, Hollow Clay Tile, Stucco) .....	36
	Paint .....	38
	Foundations .....	39
	Roofs.....	40
	Chimneys .....	42
	Windows.....	43
	Decorative Shutters .....	45
	Decorative Awnings.....	46

<b>Section VI:</b>	<b>New Construction</b>	<b>47</b>
	Applicable Secretary Of The Interior’s Standards .....	47
	Additions .....	47
	Infill Buildings.....	48
	Recommended Approaches to New Construction .....	49
<b>Section VII.</b>	<b>Special Design Considerations</b>	<b>51</b>
	Parking .....	51
	Paving Materials.....	51
	Accessory Structures .....	52
	Signage .....	53
	Fire Stairs.....	55
	Handicap Accessibility .....	55
	Fences and Walls.....	56
	Screening of Parking Lots .....	56
	Hurricane Preparedness for Historic Structures .....	56
	Historic Buildings, Assets and Vulnerabilities .....	57
	Window Shuttering Systems.....	57
	Guidelines in the Choice of Shuttering Systems .....	58
	Impact Resistant Glass.....	58
	Mechanical Systems: Heating, Ventilation and Air Conditioning (HVAC), Electrical, Plumbing, Fire Protection.....	59
	Rehabilitation Treatments.....	59
	Florida Building Code: Alternative Materials and Methods for Special Historic Buildings.....	60
<b>SECTION VIII.</b>	<b>Requests for Demolition, Relocation of Buildings, Provision for Economic Hardship and Appeals</b>	<b>61</b>
	Certificates of Appropriateness for Demolition .....	61
	Undue Economic Hardship.....	61
	Unsound Structures .....	62
	Mitigation Efforts.....	62
	Relocation of Buildings .....	62
	Appeals of Historic Preservation Board Decisions.....	63

<b>SECTION IX: Historic Preservation Incentives</b>	<b>65</b>
Federal Level: Investment Tax Credit (ITC) .....	65
Local Level: Ad Valorem Tax Incentives .....	65
Community Redevelopment Agency (CRA): Historic Façade Easement.....	66
<b>Appendix A. Certificate of Appropriateness – Approval Matrix</b>	<b>67</b>
<b>Appendix B. The Secretary of the Interior’s Standards for Rehabilitation</b>	<b>69</b>
<b>Appendix C. A Glossary of Frequently Used Terms</b>	<b>71</b>
<b>Appendix D. Additional Resources, State and Federal Agencies, Organizations</b>	<b>77</b>