

South Elevation

3/16"=1'-0"

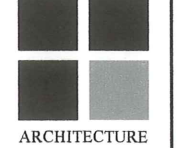


East Elevation

3/16"=1'-0"

| ELEVATION NOTES | |
|-----------------|--|
| A | STANDING SEAM METAL ROOF |
| D | FOAM OUTRIGGERS WITH FIBER GLASS COATING |
| C | SHED ROOF WITH STANDING SEAM METAL ROOF |
| D | PAINTED CYPRESS BRACKETS |
| E | SMOOTH STUCCO FINISH COLUMN |
| F | SMOOTH STUCCO FINISH |
| G | SMOOTH STUCCO BAND |
| H | SMOOTH STUCCO BASE BANDING |
| I | 2" SMOOTH STUCCO BAND TOP AND BOTTOM OF WINDOW |
| J | 4" SMOOTH STUCCO BAND |
| K | 2" SMOOTH STUCCO BAND |
| L | ALUMINUM LAMERS BY SOUTH FLORIDA ALUMINUM |
| M | ALUMINUM RAILINGS BY SOUTH FLORIDA ALUMINUM |
| N | DECORATIVE LIGHT FIXTURE |
| O | ALUMINUM SHUTTERS BY SOUTH FLORIDA ALUMINUM |
| P | 12" CROWN MOLDING |

RICHARD JONES



ARCHITECTURE

10 S.E. FIRST AVENUE | SUITE 102
 DELRAY BEACH, FLORIDA 33444
 V 561.274.9185 | F 561.274.9196
 AA26001617 | IB26001056

WWW.RJARCHITECTURE.COM

BOUERI MIXED-USE BUILDING
 S.E. 1st. Ave. & S.E. 1st. St.
 Delray Beach, FL 33444

RABIH BOUERI
 120 North Swinton Ave.
 Delray Beach, FL 33444

FLORIDA LICENSURE

AA26001617 | IB26001056

COMMISSION # 11-016
 DESIGNER: RJ
 DRAWN BY: VV
 PLAN REVIEW: RJ

SUBMITTALS:
 SPRAB SUBMITTAL: 6-28-11

REVISIONS:

ELEVATIONS

A-4

RICHARD JONES ARCHITECTURE