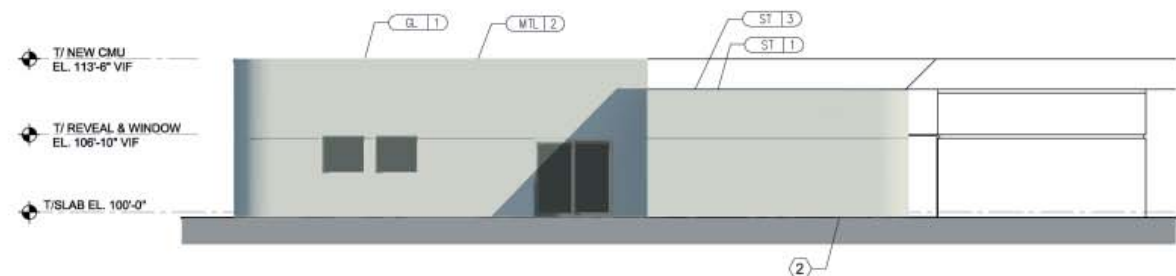
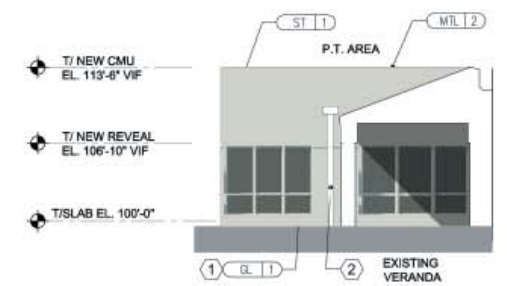


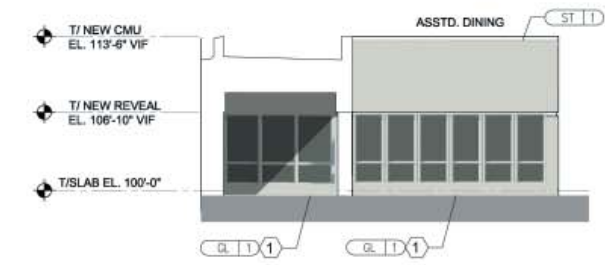
**E EAST ELEVATION**  
A201 HEALTH CENTER



**G NORTH ELEVATION**  
A201 HEALTH CENTER



**F PARTIAL NORTH ELEVATION**  
A201 HEALTH CENTER



**H PARTIAL SOUTH ELEVATION**  
A201 HEALTH CENTER

**GENERAL NOTES:**

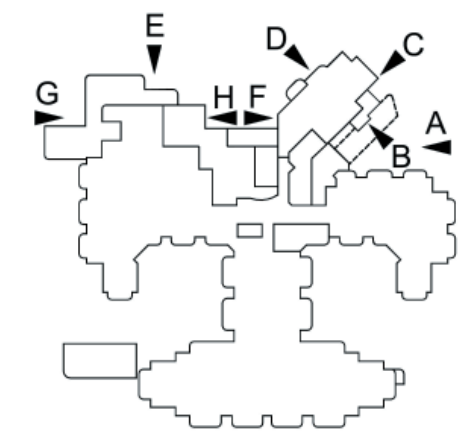
- A FINISH GRADE SHOWN ON THESE DRAWINGS IS APPROXIMATE. REFER TO CIVIL ENGINEERING AND LANDSCAPE DRAWINGS FOR GRADING, WALKS, DRIVES AND RETAINING WALLS.
- B REFER TO WINDOW AND DOOR SCHEDULES (A500SERIES) FOR TYPES AND SIZES.
- C GUTTER AND RAKE BOARDS, FASCIAS, TRIM AND CORNER BOARDS ETC. TO BE NOMINAL 1" SMOOTH PAINTED OR STAINED. (TO BE SELECTED)
- D GUTTERS TO BE PRE-FINISHED ALUMINUM. SIZE AS SHOWN ON DRAWINGS. GUTTERS SHALL BE EXTRUDED IN SINGLE-PIECE LENGTHS WHEREVER POSSIBLE.
- E MATERIAL SELECTION TO BE APPROVED BY OWNER.

**MATERIAL LEGEND:**

ST 1	STUCCO - MATCH EXISTING COLOR & TEXTURE
ST 2	STUCCO - COLOR TO BE APPROVED
ST 3	STUCCO REVEAL
GL 1	IMPACT RESISTANT GLAZING
GL 2	IMPACT RESISTANT GLAZED ENTRANCE
MTL 1	METAL CANOPY
MTL 2	PREFINISHED METAL COPING
MTL 3	METAL ROOF
T 1	EXTERIOR TILE - COLOR TO BE APPROVED

**SPECIFIC NOTES:**

- 1 ALUMINUM CURTAIN WALL SYSTEM
- 2 COORDINATE ALL NEW DOWNSPOUT AND SCUPPER BOX LOCATIONS WITH ROOF PLAN AND ENGINEER DRAWINGS.



**KEY PLAN**  
HEALTH CENTER SCALE: NTS