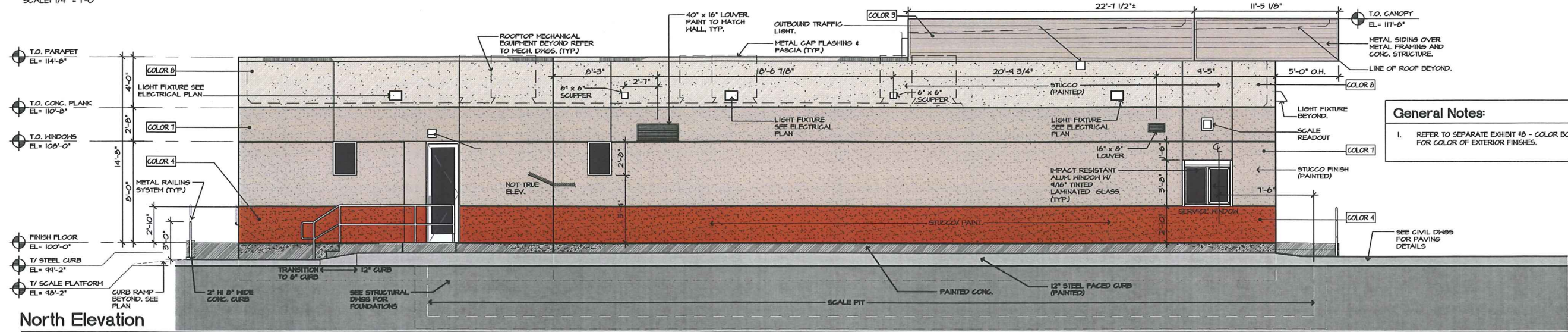


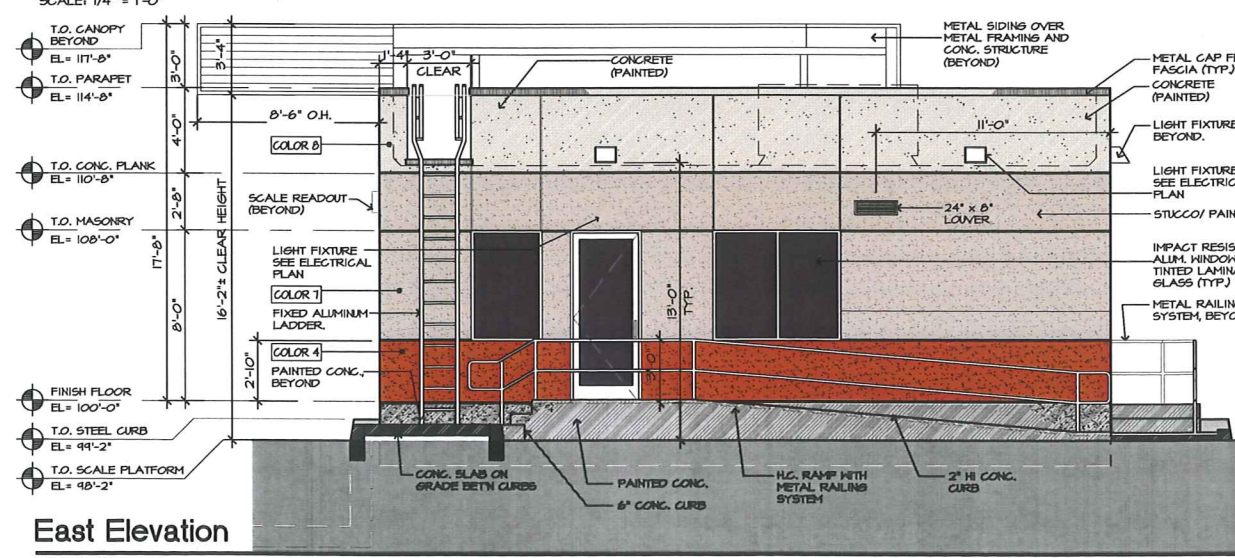
South Elevation

SCALE: 1/4" = 1'-0"



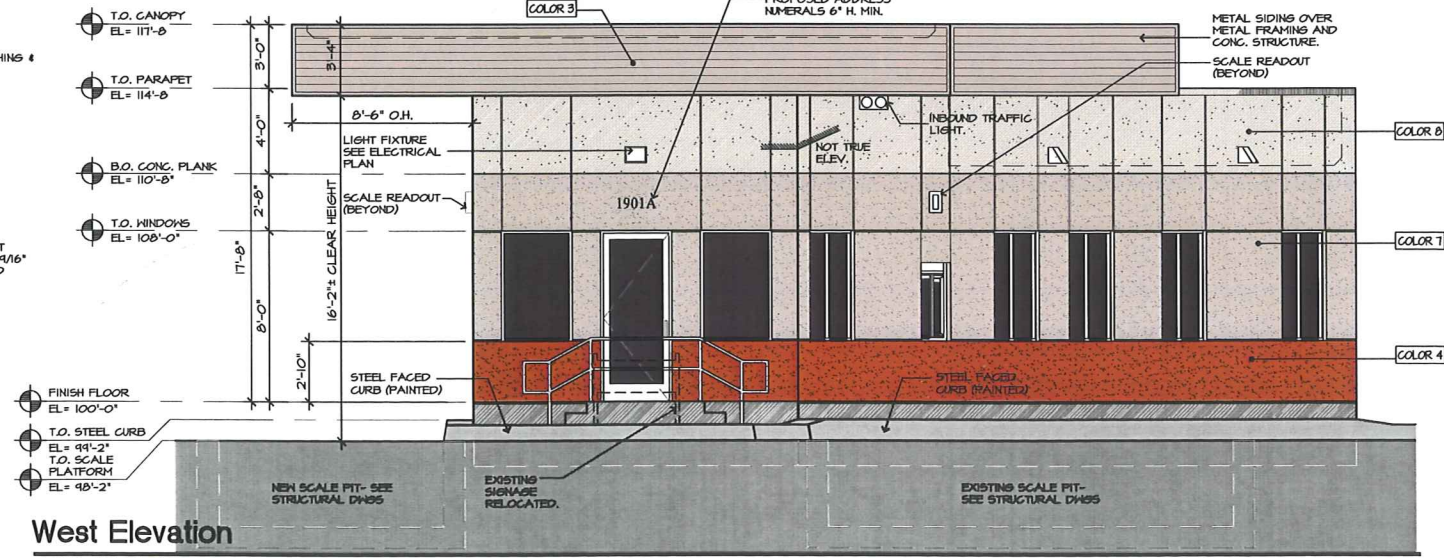
North Elevation

SCALE: 1/4" = 1'-0"



East Elevation

SCALE: 1/4" = 1'-0"



West Elevation

SCALE: 1/4" = 1'-0"

**General Notes:**  
 1. REFER TO SEPARATE EXHIBIT #8 - COLOR BOARD - FOR COLOR OF EXTERIOR FINISHES.